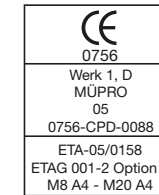
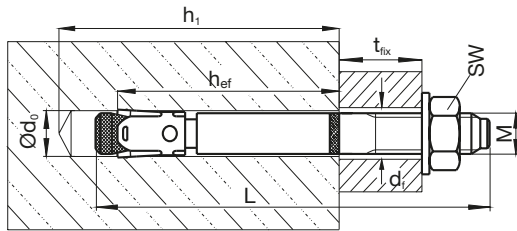


Montageanleitung V4A Hochleistungsanker BZ

- DE - Montageanleitung V4A Hochleistungsanker BZ
- GB - Assembly Instruction V4A Heavy duty anchor BZ
- F - Mode d'emploi V4A Cheville lourde BZ
- NL - Montagevoorschrift V4A Keilboutankers BZ
- DK - Montagevejledning V4A Gennemstiksankre BZ
- N - Montasje Anvisning V4A Stikkbolt BZ
- SF - Asennusohje V4A Kiila-ankkuri BZ
- I - Manuale di montaggio V4A Tasselo a autoespansione BZ
- E - Instrucciones de montaje V4A Anclaje de alto rendimiento BZ



MÜPRO GmbH
 Borsigstraße 14
 65205 Wiesbaden
 Deutschland
 Tel.: +49 (61 22) 80 80
 Fax: +49 (61 22) 47 02
www.muepro.de

	M	Ø d ₀ [mm]	h ₁ [mm]	h _{ef} [mm]	L [mm]	t _{fix} [mm]	T _{inst} [mm]	d _f [mm]	SW [mm]
	M8	8	60	46	95	30	15	9	13
	M8	8	60	46	115	50	15	9	13
	M10	10	75	60	90	10	35	12	17
	M10	10	75	60	110	30	35	12	17
	M10	10	75	60	130	50	35	12	17
	M12	12	90	65	107	15	50	14	19
	M12	12	90	65	142	50	50	14	19
	M12	12	90	65	177	85	50	14	19

